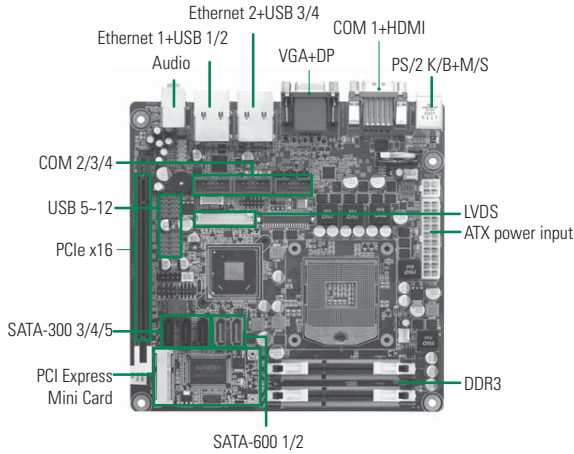


MANO860

Socket G2 Intel® Core™ i7/i5/i3 & Celeron® Mini ITX SBC with Intel® QM67, DisplayPort/HDMI/VGA/LVDS, SATA-600, Dual LAN and RAID



System

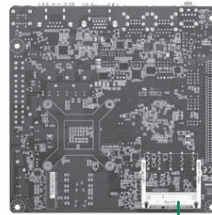
CPU	Socket G2 (rPGA 988B) for 2nd Generation Intel® Core™ i7/i5/i3 and Celeron® processor
System Memory	2 x 204-pin SO-DIMM support DDR3-1066/1333 max. up to 16 GB
Chipset	Intel® QM67
BIOS	AMI UEFI BIOS
SSD	1 x CFast™
Watchdog Timer	255 levels, 1~255 sec.
Expansion Interface	1 x PCIe x16 Gen. 2 1 x PCI Express Mini Card
Battery	Lithium 3 V / 220 mAh
Power Requirements	+12V @ 4.86A, +5V @ 1.28A, +3.3V @ 1.05A, +5VSB @ 0.36A, -12V @ 0.41A
Size	170 x 170 mm
Board Thickness	1.6 mm
Temperature	0° ~ +60°C (32°F ~ 140°F), operation
Operation Humidity	10% ~ 95% relative humidity, non-condensing

I/O

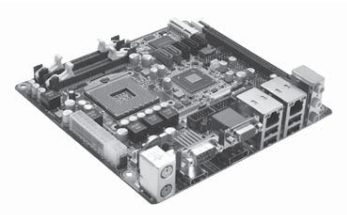
MIO	1 x PS/2 keyboard 1 x PS/2 mouse 4 x RS-232 (COM 2/3/4); with +5V/+12V powered
SATA	2 x SATA-600, 3 x SATA-300, support RAID 0/1/5/10
Hardware Monitoring	Detect CPU/system temperature, voltage and support Smart fan control
Ethernet	1st port as 10/100/1000 Mbps supports Wake-on-LAN, PXE Boot ROM with Intel® 82579LM 2nd port as 10/100/1000 Mbps supports Wake-on-LAN, PXE Boot ROM with Intel® 82583V
Audio	HD Codec audio as MIC-in/Line-in/Line-out speaker-out with Realtek ALC892
USB	12 x USB 2.0
TPM	Infineon SLB9625 for trusted platform
SMBus	System Management Bus for advanced monitoring/control
Digital I/O	8 channels (4-IN & 4-OUT)

Features

- Socket G2 (rPGA 988B) 2nd Generation Intel® Quad/ Dual Core™ i7/i5/i3 and Celeron® processor
- 2 DDR3-1066/1333 MHz, max. up to 16 GB
- PCIe x16 Gen. 2 supported
- 2 x SATA-600, 3 x SATA-300, support RAID 0/1/5/10
- Intel® iAMT supported
- TPM supported
- Display: DisplayPort/HDMI/VGA/LVDS



▲ Rear view CFast



▲ Side view

Display

Chipset	Intel® HD Graphics 2000/3000
Memory Size	1.7 GB
Display Interface	1 x DP 1 x HDMI 1 x LVDS 1 x VGA

Packing List

User's manual/utility CD, SATA cable, I/O bracket

Ordering Information

Standard	
MANO860PHGGA (P/N: E38M860100)	Socket G2 Mini ITX SBC with Intel® Core™ i7/i5/i3, VGA/ DisplayPort/HDMI/LVDS, 2 GbE LAN, HD audio, 4 COM, 5 SATA and CFast™
Optional	
59460642100E	COM Port Cable, 5 X 2P, P=2.54 mm, L=300 mm

SBC Services and Solutions

Systems on Modules

Embedded SBCs > EPIC

Embedded SBCs > 3.5" Capa

Embedded SBCs > Nano-ITX

Embedded SBCs > Pico-ITX

Embedded SBCs > PC/104

4 Industrial Motherboards

Slot CPU Cards

ARM Embedded Boards

Accessories

Appendix

* All specifications and photos are subject to change without notice.

