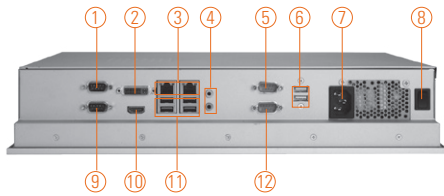
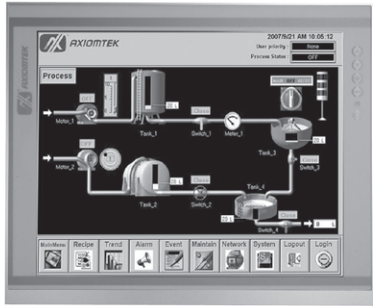


P1177S-871

17" SXGA TFT Slim Industrial Touch Panel Computer with Intel® Core™ i7/i5/i3, Celeron® & Pentium® Processor



- | | | |
|---|-------------------|--------------------|
| 1. COM 1 with 5V & 12V (RS-232/422/485) | 6. USB 2.0 x 2 | 11. USB 3.0 x 4 |
| 2. DVI-I | 7. AC plug | 12. COM 4 (RS-232) |
| 3. Ethernet x 2 | 8. Power switch | |
| 4. Audio (MIC-in/Line-out) | 9. COM 2 (RS-232) | |
| 5. COM 3 with 5V & 12V (RS-232) | 10. HDMI | |



Introduction

The P1177S-871 is a multi-media 17" touch panel PC for kiosk application. It has a fashionable mechanism design and industrial-grade material front bezel which can avoid damage from chemical corrosion. To meet the demands of multimedia application, the P1177S-871 is powered by the high performance LGA1155 socket 3rd & 2nd generation Intel® Core™ i7/i5/i3, Celeron® & Pentium® processor with Intel® Q77 Express chipset. It features four COM ports, two Gigabit Ethernet and up to 16 GB memory of dual-channel DDR3 that delivers high computing capability for high performance-demanding applications. The industrial panel PC is most suitable for kiosk, factory and automation fields.

Dual Monitor Display

If larger viewing area is desired, an additional display can be connected via the system's VGA or HDMI port to help enhance worker's productivity level.

Speaker and WLAN Antenna Supported

The P1177S-871 features built-in speakers for kiosk application to display multimedia content program. It also supports WLAN module (optional) antenna for wireless network connectivity.

Friendly Less Screw Design

The P1177S-871 is designed with ease of maintenance in mind. There are only three screws on the back chassis, so that technicians can quickly remove the system's back cover with minimum effort.

Features

- 17" SXGA TFT LCD display
- LGA1155 socket 3rd & 2nd generation Intel® Core™ i7/i5/i3, Celeron® & Pentium® processor
- Intel® Q77
- Less screw design for easy installation
- 4 USB 3.0, 2 USB 2.0 and 4 COM ports
- Built-in speakers and optional Wi-Fi 802.11 b/g/n module
- Robust aluminum with IP65 compliant front bezel design



▲ Side view

Specifications

Front Bezel	Aluminum w/ IP65/NEMA 4 rugged protection	
LCD Panel	Display Type	17" SXGA TFT LCD
	Brightness	350 nits
	Resolution	1280 x 1024 pixels
	Viewing Angle	170°/160°
Main System	CPU	LGA1155 socket 3rd & 2nd generation Intel® Core™ i7/i5/i3, Celeron® & Pentium® processor
	Chipset	Intel® Q77
	System Memory	2 x 204-pin DDR3 SO-DIMM dual channel max. up to 16 GB
	BIOS	AMI UEFI BIOS with OA 3.0 built
	Storage	1 x 3.5" or 2 x 2.5" SATA HDD
	Watchdog Timer	255 levels, 1~255 sec.



Specifications

IO Connector	2 x RS-232 (COM 2/4) 1 x RS-232/422/485 with 5V & 12V (COM 1) 1 x RS-232 with 5V & 12V (COM 3) 1 x DVI-I 1 x HDMI 4 x USB 3.0 2 x USB 2.0 2 x 10/100/1000 Mbps Ethernet 1 x Audio (Mic-in/Line-out)
Expansion Interface	N/A
Touchscreen	5-wire resistive type Light transmission 79% 1 million activations (typical) at a single point
Power Supply	100 ~ 240VAC, 270W
Power Consumption	178W
Dimensions	410 mm (16.14") (W) x 80 mm (3.15") (D) x 338 mm (13.3") (H)
Packing Dimension	610 mm (24.02") (W) x 260 mm (10.24") (D) x 590 mm (23.23") (H)
Weight(net/gross)	7 kg (15.43 lb)/ 10.8 kg (23.8 lb)
Environment	Operating temperature: 0°C ~ +45°C (+32°F ~ +113°F) Storage temperature: -20°C ~ +60°C (-4°F ~ +140°F) Relative humidity: 10%~ 95%@40°C, non-considering Operating vibration: 1.0G, 5-500Hz, random
Certificate	CE

Ordering Information

P1177S-871	17" SXGA slim industrial touch panel computer supports LGA1155 socket 3rd generation Intel® Core™ i7/i5/i3, Pentium® & Celeron® processor, resistive touch screen and 100~240VAC
------------	--

* Specification and certifications are based on options and may vary.

Optional Accessories

82211271000E	Wireless LAN kit
82011750130E	2 x 2.5" HDD Kit
82211770060E	VESA & wall mount kit
82211770070E	Rack mount kit
E202003330	VM-101 (VESA ARM clamp type)
E202003329	VM-105 (VESA ARM wall-mount)

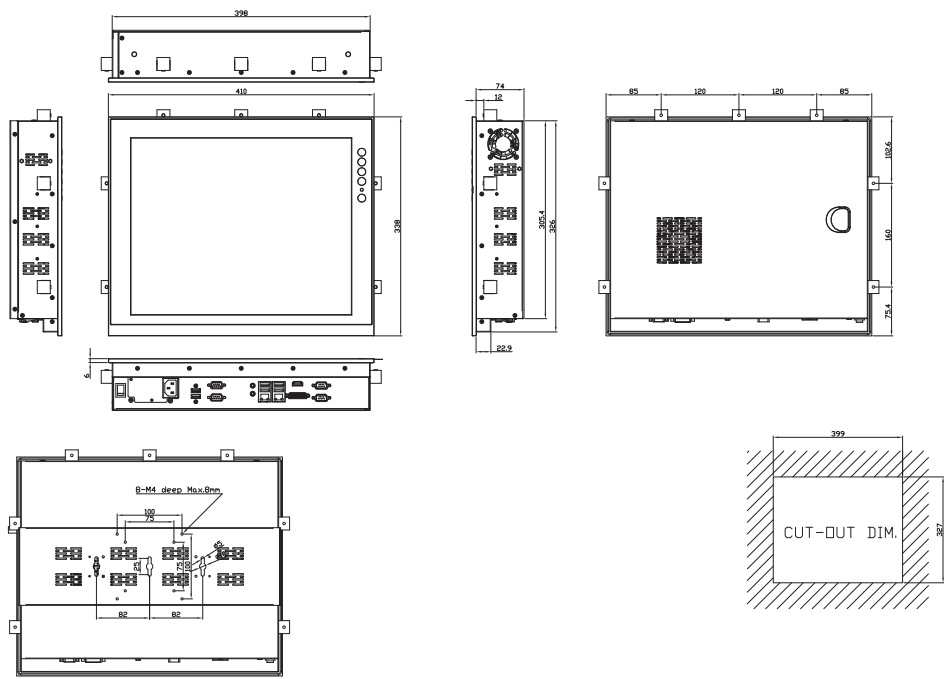
Optional OS Installation

Windows® XP/XPe
Windows® 7/8.1
Windows® Embedded 7/8



▲ Less screw design

Dimensions



Overview

Fanless Touch Panel Computers

Heavy-duty Fanless Touch Panel Computers

3

Industrial Touch Panel Computers

Industrial Touch panel Monitors

Infotainment Touch Panel Computers

Healthcare & Medical Solutions

Open Frame Panel Computers

Accessories

