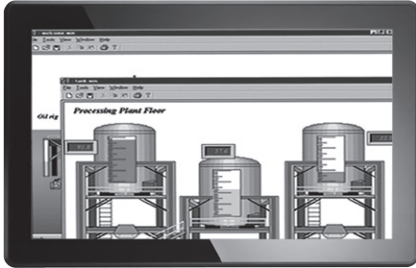


# P6157W

15.6" WXGA TFT Widescreen Industrial LCD Monitor



- |                 |                         |
|-----------------|-------------------------|
| 1. Exit         | 7. DC power input       |
| 2. Menu         | 8. T/S port             |
| 3. SEL-         | 9. DVI (Only for DVI-D) |
| 4. SEL+         | 10. VGA                 |
| 5. Power LED    | 11. Video (CVBS)        |
| 6. Power switch | 12. S-video             |

## Features

- 15.6" TFT 300 nits WXGA LCD
- NEMA 4/12 (IP65)- compliant panel mounting flat panel monitor
- Supports panel mount, wall mount, VESA mount
- Multi touch 15.6" projective capacitive
- Supports full range screw-type (locked) AC-in or 24V DC-in (option)
- Supports multi-signal inputs: VGA, S-video, Video and DVI-D



▲ Modularized design

## Introduction

The P6157W is a slim & compact with flat front bezel design industrial LCD monitor, which adopts 15.6-inch 300 nits WXGA LCD display and supports multi-signal interfaces including DVI, VGA, S-Video, Video. Featuring NEMA4/12 & IP65 compliant front bezel, screw-type adaptor plug design, and 12/24V DC-In means it is fit for all kinds of industrial environments. Moreover, the P6157W supports panel mount, wall mount or VESA FPMPMI (Video Electronics Standards Association Flat Panel Monitor Physical Mounting Interface) mounting. With the compact mechanism design, users can enjoy free from space constraint. It is especially suitable for POI/POS, excellent HMI and all kinds of heavy-duty industrial fields.

## Specifications

Front Bezel	NEMA 4/12 (IP65)-compliant, metal front bezel	
Mounting	Panel mounting, wall mounting, VESA FPMPMI mounting (video electronics standards association flat panel monitor physical mounting interface)	
LCD Panel	Display	15.6" TFT WXGA LCD
	Max. Resolution	1366 x 768
	Max. Colors	16.7M
	Active Area (mm)	344.232 x 193.536
	Pixel Pitch (mm)	0.252 x 0.252
	Response Time	8ms
	Backlight	LED
	Backlight MTBF	50,000 hrs
	Viewing Angle (H/V)	170°/160°
	Contrast Ratio	500 (TYP.)
Brightness (cd/m <sup>2</sup> )	300 nits	
Display Control	OSD (on screen display)	
Display Mode	VGA 640 x 350 (70Hz), VGA 640 x 480 (60/72/75Hz), VGA 720 x 400 (70Hz), SXGA 800 x 600 (60/72/75Hz), XGA 1024 x 768 (60/72/75Hz) WXGA 1366 x 768 (60Hz)	



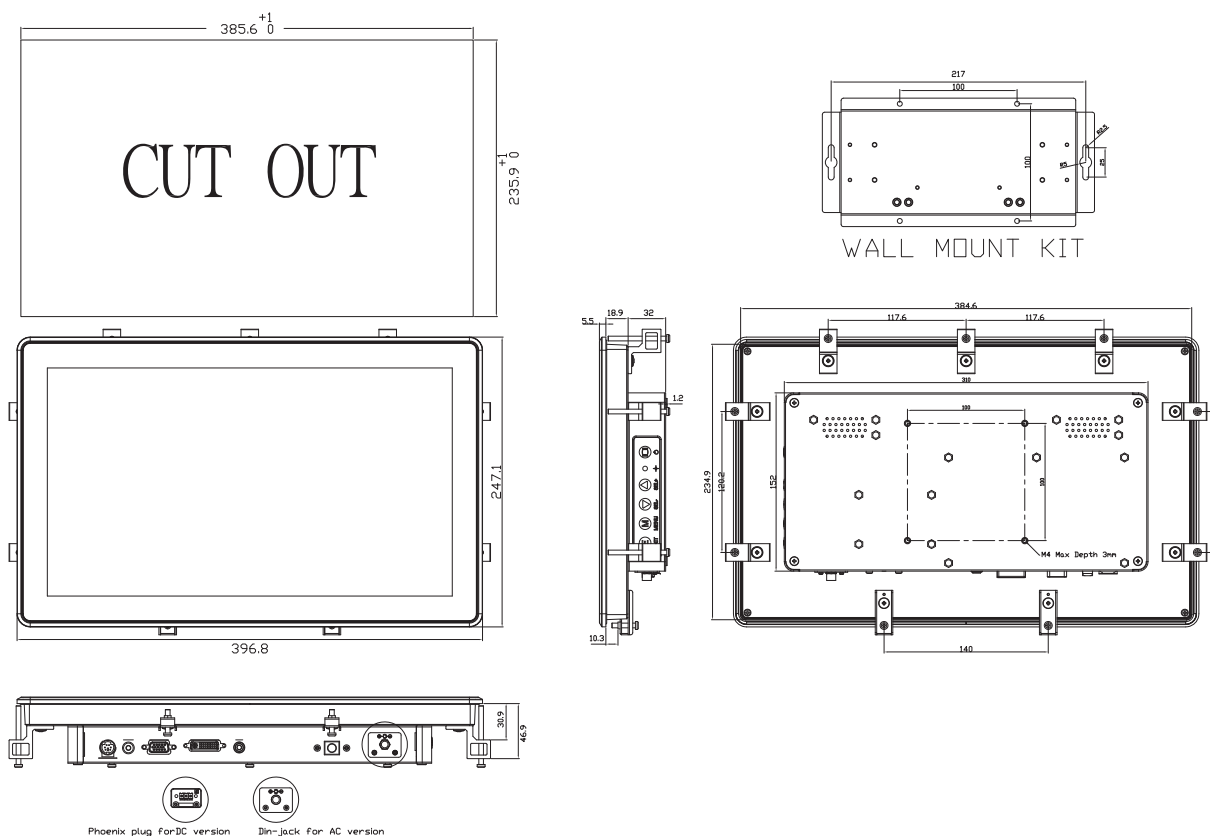
## Specifications

Input Signal	VGA Video: R.G.B Analog 0.7v Peak-to-Peak Video S-video DVI (Only for DVI-D) Touchscreen: USB interface
I/O Connectors	1 x USB for touchscreen version 1 x VGA input 1 x RCA for video 1 x S-video for video 1 x DVI 1 x Screw-type DC power input
Power Adapter	Screw-type external AC / DC power adapter
Touchscreen	Thickness 2.4 mm Multi-touch 15.6" projective capacitive
Dimensions	396.8 mm (15.62") (W) x 57.7 mm (2.68") (D) x 247.1 mm (9.73") (H)
Packing Dimensions	525 mm (20.67") (W) x 186 mm (7.32") (D) x 470 mm (18.51") (H)
Weight (net/gross)	4.48 kg (9.87 lb)/ 7.88 kg (17.36 lb)
Environment	Operating temperature: 0° ~ +55°C (+32°F ~ +131°F) Storage temperature: -20°C ~ +60°C (-4°F ~ +140°F) Relative humidity: 20%~90%@40°C, non-condensing
Certificate	CE

## Ordering Information

<b>P6157W</b>		
AC Power	Panel Mount Monitor	
	Capacitive (USB)	P6157WPC-AC-U-US-EU
	Glass	P6157WPG-AC-US-EU
24VDC Power	Panel Mount Monitor	
	Capacitive (USB)	P6157WPC-24VDC-U
	Glass	P6157WPG-24VDC

## Dimensions



Overview

Fanless  
Touch Panel  
Computers

Heavy-duty  
Fanless Touch  
Panel Computers

Industrial  
Touch Panel  
Computers

4  
Industrial Touch  
panel Monitors

Infotainment  
Touch Panel  
Computers

Healthcare  
& Medical  
Solutions

Open  
Frame Panel  
Computers

Accessories

