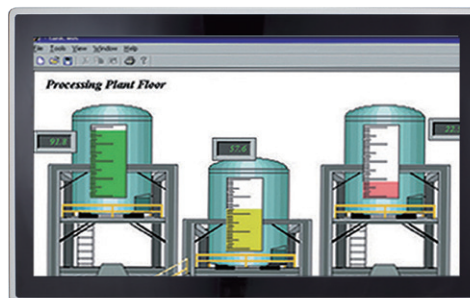


P6187W-V3 NEW

18.5" WXGA TFT Widescreen Industrial LCD Monitor

Features

- 18.5" WXGA TFT 450 nits with projective capacitive multi-touch
- NEMA 4/12 (IP65) compliant flat panel monitor
- Supports panel mount, wall mount, and VESA mount
- 24 VDC power input
- VGA, HDMI and DisplayPort, with multi-signal inputs



1. USB touch interface
2. Audio (Line-in)
3. VGA
4. HDMI
5. DisplayPort
6. 24 VDC power input

Introduction

The P6187W-V3 is a slim-type industrial LCD monitor with flat front bezel design, which adopts 18.5-inch 450 nits full HD LCD display and supports multi-signal interfaces including DisplayPort, VGA, and HDMI. Featuring IP65 (NEMA 4)-rated front bezel, 24VDC power input, the 18.5-inch P6187W-V3 is designed to fit for all kinds of industrial environments. Moreover, the P6187W-V3 supports panel mount, wall mount or VESA FPM PMI (Video Electronics Standards Association Flat Panel Monitor Physical Mounting Interface) mounting. With the compact mechanism design, the P6187W-V3 can be deployed easily in any space-limited place. It is especially suitable for POI/POS, HMI, and all kinds of heavy-duty industrial fields.

Specifications

Front Bezel	NEMA 4/12 (IP65)-compliant and flat front bezel	
Mounting	Panel mount, wall mount, and VESA arm FPM PMI mounting (video electronics standards association Flat Panel monitor physical mounting interface)	
LCD Panel	Display	18.5" WXGA TFT LCD
	Max. Resolution	1366 x 768
	Max. Colors	16.7M
	Active Area (mm)	409.8 x 230.4
	Pixel Pitch (um)	300 x 300
	Response Time	5ms
	Backlight	LED
	Backlight MTBF	50,000 hrs
	Viewing Angle (H/V)	170°/160°
Contrast Ratio	1000 (TYP.)	
Brightness (cd/m ²)	450 nits	
Display Control	OSD (on screen display)	
Input Signal	VGA	
	HDMI	
	DisplayPort	
	Touchscreen: USB interface	

Specifications

I/O Connectors	1 x USB for touchscreen version 1 x Audio (Line-in) 1 x VGA 1 x DisplayPort 1 x HDMI 1 x Power input with terminal block (DC version)
Audio	2 x Speaker
Power Supply	DC Version: 24VDC
Power Consumption	21W
Touchscreen	Projective capacitive multi-touch
Dimensions	460 mm (18.11") (W) x 53.2 mm (2.09") (D) x 285 mm (11.22") (H)
Packing Dimensions	605 mm (23.81") (W) x 200 mm (7.87") (D) x 505 mm (19.88") (H)
Weight (net/gross)	7.56 kg (16.67 lb)/ 8.92 kg (19.67 lb)
Operating Temperature	0°C to +50°C (+32°F to +122°F)
Relative Humidity	10% to 90% @ +40°C, non-condensing
Certifications	CE

Packing List

1 x P6187W-V3 unit
1 x VGA cable
1 x USB cable for touch
1 x Audio cable
1 x 3-pin Terminal block (DC version only)

Ordering Information

P6187W

P6187WPC-DC-U-V3 18.5" industrial monitor with capacitive touch screen and (P/N: E226187111) DC version

* Other configuration by request

* Specification and certifications may vary based on different requirements

Optional Accessories

50906D24000E	Adaptor 24V/120W,wire only
59902000030E	US 1.8M power cord
59904000050E	EK 1.83M power cord
59903000080E	EU 1.83M power cord
590000012700	HDMI cable
59461713910E	DisplayPort cable
881262170A0E	Panel mount kit
881231770A0E	Wall mount kit
E221177116	Desktop stand for 15.6" to 21.5"

Dimensions

