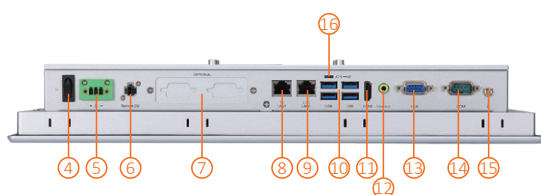
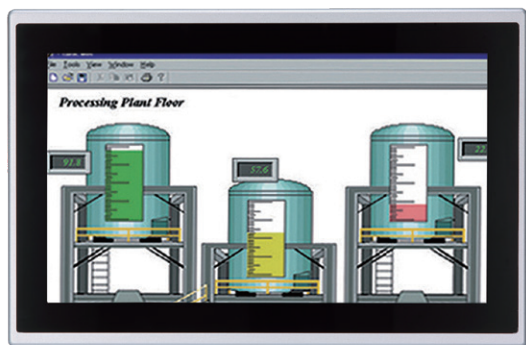


# GOT315A-ELK-WCD NEW

15.6" WXGA TFT Multi-touch Panel Computer with Intel® Celeron® Processor J6412



- |  |  |
|--|--|
| <ol style="list-style-type: none"> <li>1. Backlight on/off</li> <li>2. Brightness settings +/-</li> <li>3. Speaker</li> <li>4. Power button</li> <li>5. DC power input</li> <li>6. Remote power switch</li> <li>7. Flexible I/O (default 2 x RS-232)</li> <li>8. 1 x 1GbE LAN</li> </ol> | <ol style="list-style-type: none"> <li>9. 1 x 2.5GbE LAN</li> <li>10. 4 x USB 3.2 Gen2</li> <li>11. 1 x HDMI</li> <li>12. 1 x Line-in/out</li> <li>13. 1 x VGA</li> <li>14. 1 x COM for RS-232/422/485</li> <li>15. Grounding hole</li> <li>16. AT/ATX switch</li> </ol> |
|--|--|

## Features

- 15.6" WXGA projected capacitive multi-touch widescreen
- Fanless design with Intel® Celeron® processor J6412
- Supports WLAN module and antenna (optional)
- 2.5" SATA SSD
- 2 LAN, 4 USB, 1+2 COM, 1 HDMI, and 1 VGA
- IP65-rated aluminum front bezel
- Supports panel mount, VESA mount, desktop stand, and wall mount



▲ Side View

## Introduction

The GOT315A-ELK-WCD is a multi-touch fanless type panel PC with 15.6-inch WXGA LCD and supports Intel® Celeron® processor J6412. It also provides M.2 Key E and PCI Express Mini Card slots for add-on devices such like Wi-Fi module for factory automation, and oil pipe monitoring system.

### 15.6-inch WXGA LCD with Projected Capacitive Multi-touch

The 15.6" WXGA touch panel PC supports 400 nits brightness, able to display contents in WXGA resolution. With projected capacitive multi-touch screen, users can operate the device more directly and friendly. The touch glass surface is up to 3H for anti-scratch purpose.

## Specifications

|                  |                                     |  |
|------------------|-------------------------------------|--|
| Front Bezel      | IP65 front bezel                    |  |
| LCD Panel        | Display Type                        | 15.6" WXGA TFT LCD                                       |
|                  | Brightness (cd/m <sup>2</sup> )     | 400 nits   |
|                  | Resolution                          | 1366 x 768   |
| Main System      | CPU                                 | Intel® Celeron® processor J6412 (TDP 10W) (Elkhart Lake) |
|                  | Chipset                             | SoC integrated   |
|                  | System Memory                       | 1 x 260-pin DDR4 2133/2400/2666/3200 SO-DIMM, up to 32GB |
|                  | BIOS                                | AMI UEFI BIOS  |
|                  | Storage                             | 1 x mSATA  |
|                  |                                     | 1 x 2.5" SATA SSD (7 mm or 9.5 mm height; removable)     |
|                  | Watchdog Timer                      | 255 levels, 0 to 255 sec.                                |
| Onboard Graphics | Integrated with Intel® UHD Graphics |  |

|                       |  |
|-----------------------|--|
| I/O Connector         | 1 x Flexible I/O (default 2 x RS-232)<br>1 x COM for RS-232/422/485<br>1 x RJ-45 2.5Gb Base-T Ethernet (Intel® I226-LM with TSN)<br>1 x RJ-45 1Gb Base-T Ethernet (Intel® I210-AT)<br>4 x USB 3.2 Gen2 (10 Gbps)<br>1 x Phoenix type connector for DC power input<br>1 x Switch for power on/off (ATX)<br>1 x Line-in/out<br>1 x HDMI 1.4 (4K60Hz YCbCr420)<br>1 x VGA<br>1 x Remote power switch<br>1 x AT/ATX switch (DC type only)<br>1 x Grounding hole (DC version) |
| TPM                   | TPM 2.0  |
| Expansion Interface   | 1 x Full-size PCI-Express Mini Card slot (PCIe/SATA + USB)<br>1 x M.2 Key E 2230 (for Wi-Fi)   |
| Touchscreen           | Projected capacitive multi-touch   |
| Power Supply          | 9 to 36VDC<br>1 x Terminal block   |
| Power Consumption     | 60.3W (Maximum)  |
| Dimensions            | 409.18 mm (16.1") x 59.4 mm (2.3") x 265.18 mm (10.4")   |
| Packing Dimensions    | 535 mm (21.06") (W) x 485 mm (19.09") (D) x 196 mm (7.71") (H)   |
| Weight (net/gross)    | 5.07 kg (11.17 lb)/ 7.11 kg (15.66 lb)   |
| Operating Temperature | -10°C to 50°C (+14°F to +122°F)  |
| Relative Humidity     | 20% to 90% @ +40°C; non-condensing   |
| Operation Vibration   | 1G, 5 to 500Hz, random for 2.5" SATA SSD   |
| Certifications        | CE, EN 61000-6-2, EN 61000-6-4, and FCC Class A  |

## Ordering Information

|                                      |  |
|--------------------------------------|--|
| GOT315A-ELK-WCD<br>(P/N: E22B315A00) | 15.6" WXGA TFT fanless touch panel computer with Intel® Celeron® processor J6412, projected capacitive multi-touch screen, and 9 to 36 VDC terminal block with small Phoenix connector |
|--------------------------------------|--|

\* Other configuration by request

\* Specification and certifications may vary based on different requirements

## Packing List

|                       |
|-----------------------|
| 1 x GOT315A-ELK-WCD   |
| 1 x Phoenix connector |
| 1 x Panel mount kit   |

## Optional Accessories

4G LTE kit

Wi-Fi kit

RFID kit

Barcode scanner kit

|              |  |
|--------------|--|
| 881231770A0E | Wall mount kit   |
| 509000001500 | Adaptor 24V/120W, wire only, FSP120-AAAN3                          |
| 882B315A1A0E | Panel mount kit  |
| E392902101   | AX92902+AX93287 full-size PCI Express Mini Module with Gigabit LAN |
| E392903100   | AX92903 full-size PCI Express Mini Module with CAN Bus             |
| E392904101   | AX92904 full-size PCI Express Mini Module with 32-bit DIO          |
| E392906100   | AX92906 full-size PCI Express Mini Module with COM                 |
| E392918102   | AX92918 full-size PCI Express Mini Module with 2 Gigabit LAN       |

## Optional EOS Installation

Windows® 10 IoT, Windows® 11 IoT

## Optional OS Installation

Windows® 10, Windows® 11, and Linux

## Dimensions

